

## XLamp® MT-G2 EasyWhite® LED Product Change Notification

Customer Name: MT-G2 EasyWhite®  
Customers

PCN Reference Number: CreeLED-PCN-5284  
Date Issued: March 24, 2022

Please be advised that Cree LED qualified a Major change to XLamp® MT-G2 EasyWhite LEDs and that we will begin shipping the affected product with the change 90 days after the PCN Issue Date.

Please review the additional PCN information below.

### Affected Product

Table 1 provides a list of products affected by this Major change:

Table 1 Affected Products List

XLamp LED Product	Cree LED Part Number
MT-G2 EZW	MTGBEZ-xx-xxxx-xxxxxxxxxx

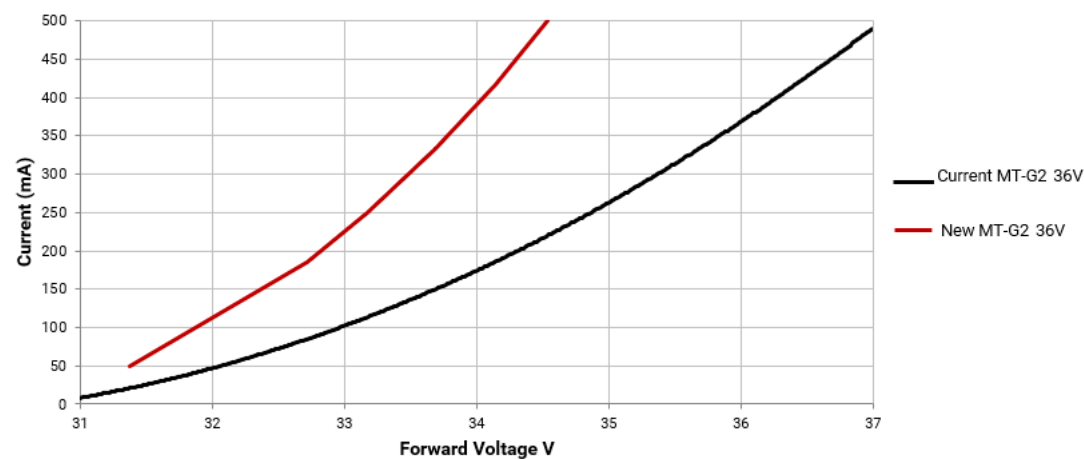
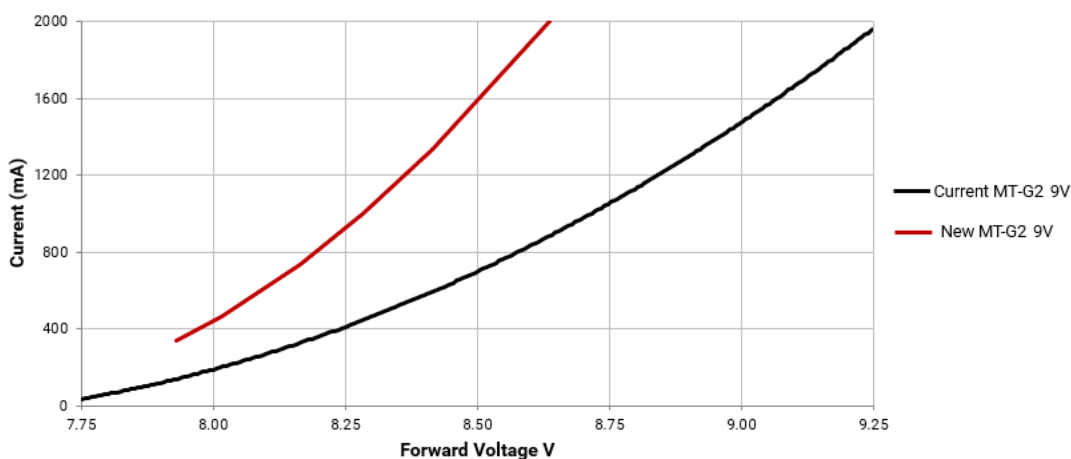
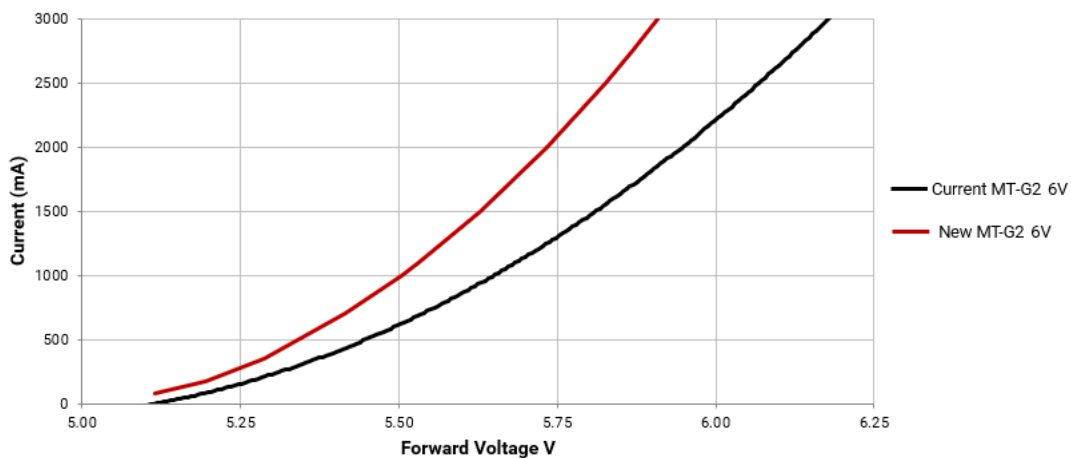
### Description of the Change

Cree LED will be changing the typical thermal resistance, typical forward voltage, viewing angle, and typical temperature coefficient of voltage characteristics for the MT-G2 EZW LEDs. Table 2 shows the current and new values.

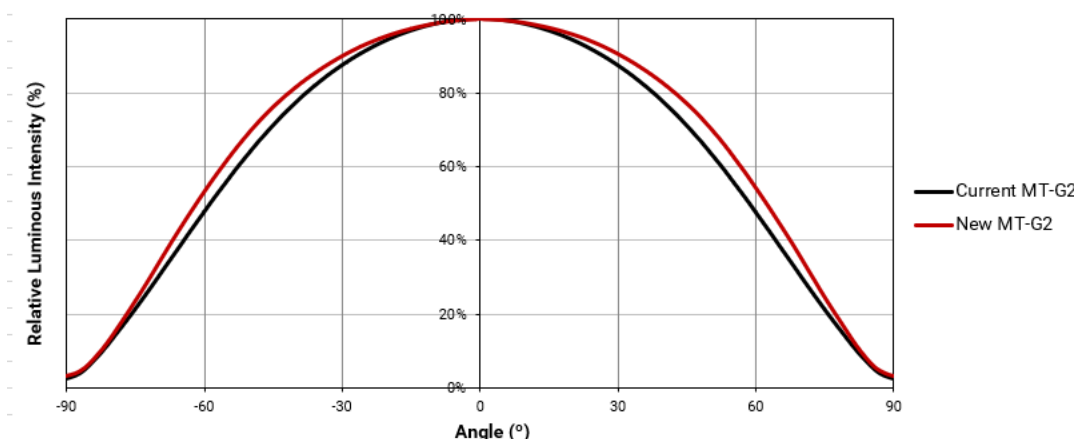
Table 2 LED Product Characteristics; Current Values & Estimated New Values

Characteristic	Version	Current Typical	New Typical
Thermal resistance, junction to solder point	6 V, 9 V, 36 V	1.5 °C/W	1.2 °C/W
Forward voltage	6 V (@ 1100 mA, 85°C)	5.7 V	5.6 V
	9 V (@ 735 mA, 85°C)	8.55 V	8.4 V
	36 V (@ 185 mA, 85°C)	34.2 V	33.6 V
Viewing angle (FWHM)	6 V, 9 V, 36 V	115°	125°
Temperature coefficient of voltage	6 V	-4 mV/°C	-3 mV/°C
	9 V	-6 mV/°C	-4 mV/°C
	36 V	-26 mV/°C	-16 mV/°C

The following graphs show the improved Forward Voltage vs. Current curves.



The following graph shows the improved Typical Spatial Distribution curve.

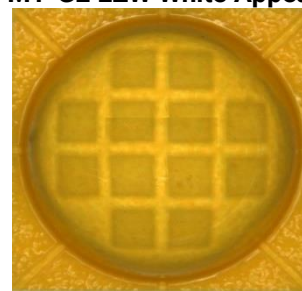


The visual appearance of the LED will change. Examples of the current and new visual appearances are shown below.

**Current MT-G2 EZW Appearance**



**New MT-G2 EZW White Appearance**



Ray files for the new performance LEDs will be available on [www.cree-led.com](http://www.cree-led.com) on or before May 1, 2022, at the following address: [XLamp MT-G2 EasyWhite LEDs \(cree-led.com\)](http://www.cree-led.com/XLamp-MT-G2-EasyWhite-LEDs)

## Reason for the Change

This change is being made to upgrade the performance and efficacy of XLamp MT-G2 EZW LEDs utilizing our latest technology platform. Additionally, this change will result in better manufacturing flexibility and improved lead times.

## Change Impact on Form, Fit, Function, or Reliability

This change has no impact on the form, fit, or reliability of these LEDs beyond the changes listed above.

## Key Dates

Table 3 provides estimated dates for key PCN Milestones based on information available at the date the PCN was issued. Any updates to these dates can be provided by the Cree LED contact listed in Table 4.

Table 3 Key PCN Estimated Date

<b>Estimated First Shipment Date:</b>	<b>May 1, 2022</b>
---------------------------------------	--------------------

Starting on the Estimated First Shipment Date in Table 3, customers may receive LEDs with the updated performance characteristics. Each reel will contain only LEDs with the current performance or only LEDs with the new performance characteristics. Reels of the new performance LEDs can be identified by a '2' in the last character of the bin code. The bin code is clearly identified on each packaged reel.

Current and new performance LEDs will not be contained in the same shipment. Current performance LEDs will be shipped until Cree LED's inventory of the current performance LEDs is depleted. Customers purchasing through a distributor will be further delayed seeing this change until the inventory with the current performance is depleted from distributor stock.

The MT-G2 EZW LED data sheet available at <https://cree-led.com/media/documents/XLampMTG2.pdf> will be updated with changes described in this PCN on or before the Estimated First Shipment Date in Table 3.

## Cree LED Contact Information

If you have any questions regarding this PCN please contact:

Table 4 PCN Contact

<b>Contact:</b>	Cree LED Customer Service
<b>Contact E-Mail:</b>	<a href="mailto:xlampsaaales@cree-led.com">xlampsaaales@cree-led.com</a>
<b>Contact Phone:</b>	US toll free: 1-844-273-3533 Outside the US: +1 919-313-5301
<b>Address:</b>	CreeLED, Inc. 4400 Silicon Dr. Durham, NC 27703-8475 USA